



HUBBELL CONNEXION 2.0

Zone Distribution System



from the Leader in Delivery Systems

The Hubbell CONNEXION 2.0 Zone Distribution System is a factory assembled, flexible, modular plug-n-play system that delivers power in raised floor installations. This unique system increases the value of the infrastructure and meets the challenges posed by new construction and renovation in commercial offices, retail outlets and educational facilities. By improving cable management, enhancing flexibility, and reducing administration expense, the CONNEXION 2.0 Zone Distribution System allows power needs to be addressed in a timely and effective manner. The basic CONNEXION 2.0 building blocks are shown below.



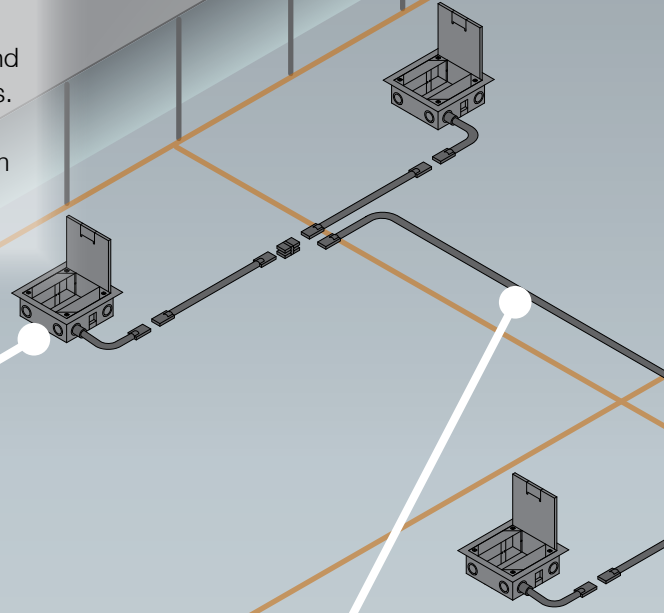
Pre-wired Floor Boxes

Custom engineered and wired to project specifications, the floor box is the electrical access point for building occupants. Available in 2, 4 or 10 gang capacity with varying depths and Black, Brass, Nickel, Bronze or Aluminum finishes, the boxes are designed to meet any décor and electrical need. The connectorized input whip allows the boxes to be installed in minutes and relocated for future moves or expansions.



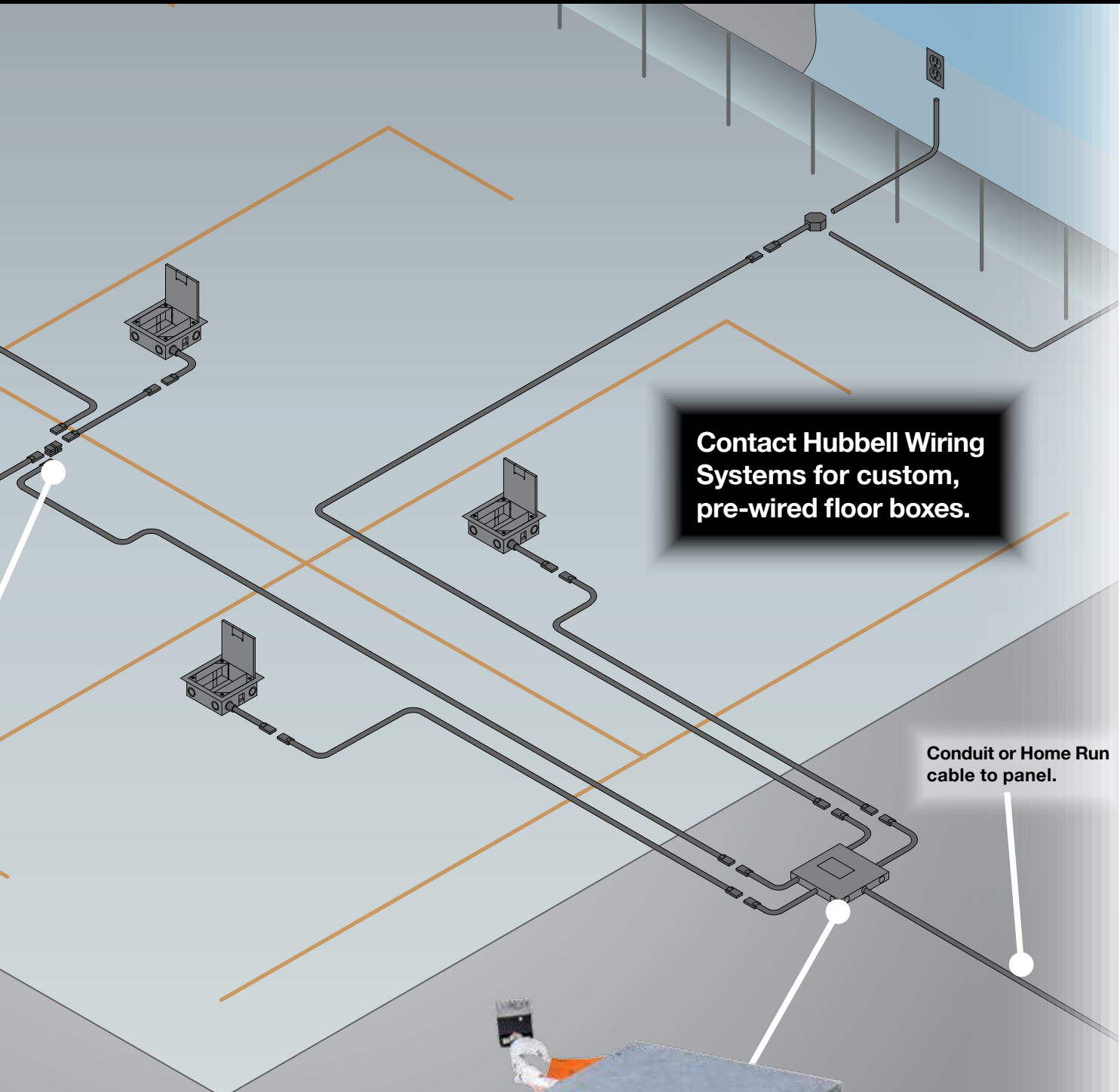
Extender cables

Extender cables run from the zone distribution box or splitter module to the pre-wired floor box. The connectorized ends allow for simple installation and future layout flexibility. Additionally, The male/female connector heads of the extender cables allow them to be extended without the use of a splitter module if required.



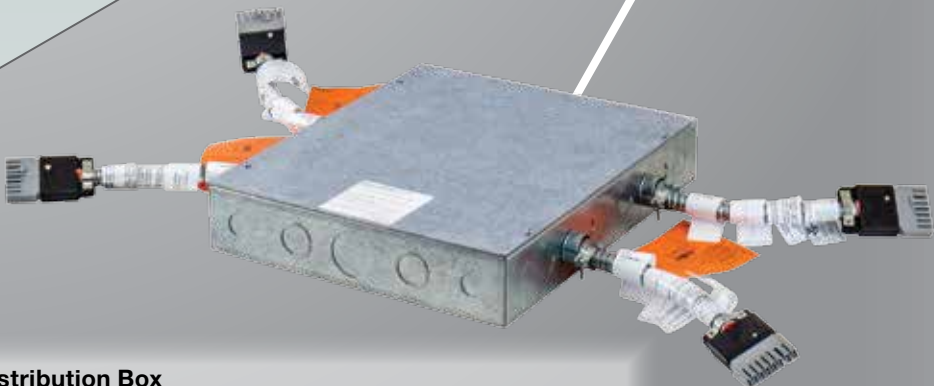
Splitters

Splitters, connected in line with the extender cables, allow for the powering of multiple floor boxes from one extender whip at the zone distribution box. They are designed for one extender cable in and up to three extender cables out.



Contact Hubbell Wiring Systems for custom, pre-wired floor boxes.

Conduit or Home Run cable to panel.



Zone Distribution Box

The zone distribution box is connected to the electrical panel and is the start of the Connexion 2.0 system. The electrical contractor will wire the designated circuits from the panel to the corresponding whips inside the zone box. After this wiring is completed, all other connections including the floor boxes are plug-n-play.

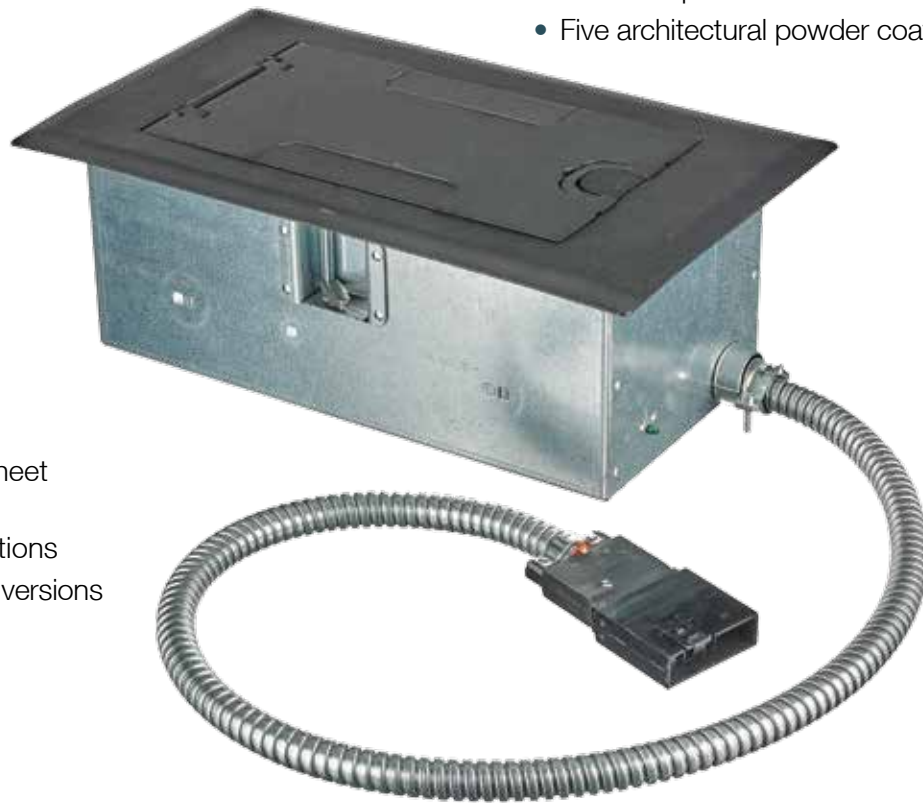
Custom Pre-Wired Access Floor Boxes

Features and Benefits

- Reduce job site fabrication time and installation labor
- Reduce job site waste
- Access Floor Box (AFB) pre-wired to specifications
- UL Listed, Manufactured Wiring Systems, UL file number E76359
- Contact Hubbell Wiring Systems for ordering information
- Floor boxes also available pre-wired with wire leads only (no connector), UL Listed as Wiring Assemblies, UL file number E305156

Cover

- 180° cover opening
- Two large fold-under cable egress doors
- Die cast aluminum construction
- ADA compliant
- Five architectural powder coat finishes



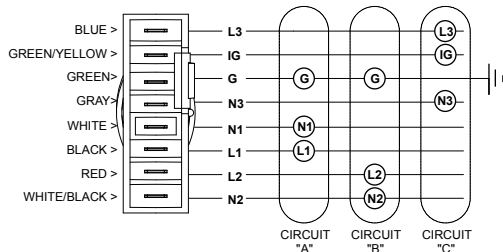
Box

- 16 gauge galvanized sheet metal construction
- 2, 4 and 10-gang variations
- Rectangular and round versions

Pre-Wired Raised Access Floor Box Options

Box Series	Description	Cut Out Dimensions	Conduit Knockouts
AFB2G25	2-Gang, 2 ½ in. Depth	6 ¾ in. x 13 ½ in.	½ in. – ¾ in. (sides) / ½ in. - 1 in. (bottom)
AFB2G50	2-Gang, 5 in. Depth	6 ¾ in. x 13 ½ in.	½ in. – 2 in. (sides) / ½ in. - 1 in. (bottom)
AFB4G25	4-Gang, 2 ½ in. Depth	11 ¼ in. x 11 ½ in.	½ in. – ¾ in. (sides) / ½ in. - 1 in. (bottom)
AFB4G50	4-Gang, 5 in. Depth	11 ¼ in. x 11 ½ in.	½ in. – 2 in. (sides) / ½ in. - 1 in. (bottom)
AFB10G55	10-Gang, 5 ½ in. Depth	11 in. x 11 ½ in. in instructions	½ in. – 2 in. (sides) / ½ in. - 1 ¼ in. (bottom)
RAFB4	4-Gang, 6 ½ in. Depth	8 ¼ in. Diameter in instructions	½ in. – 2 in. ½ in. - 1 ½ in. (sides) / ½ in. - 2 in. (bottom)

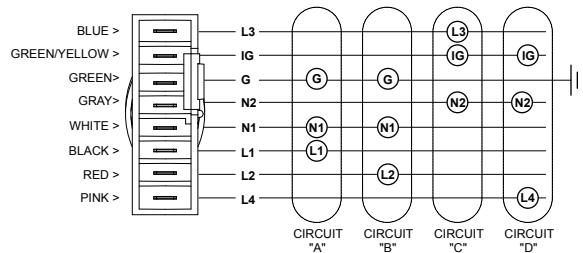
3/3/2 System Configuration (3-Hots, 3-Neutrals, 2-Grounds)



Appropriate for a 120/208 volt 3ØY power distribution and dedicated neutrals are desired.

- Three circuit capacity.
- Isolated ground capability for sensitive equipment.
- Each circuit has its own #12 AWG neutral.
- Component Rating: 20 amperes at 120/208 volt.
- 8-Wires (3 hots, 3 neutrals, 2 grounds).

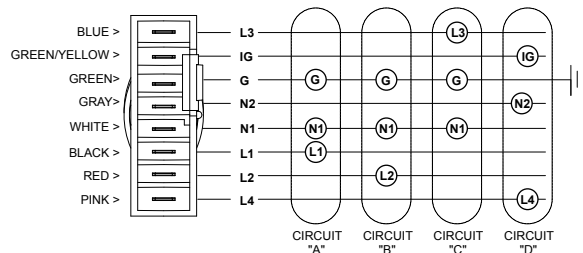
4/2/2 System Configuration (4 Hots, 2 Neutrals, 2 Grounds) 2 + 2 Wiring Configuration



Appropriate in areas where shared neutral conductors are utilized.

- Two circuits share one #10 AWG neutral to manage harmonics for general purpose.
- Two additional circuits share one #10 AWG neutral to manage harmonics for general purpose.
- Isolated ground capability for sensitive equipment.
- Component Rating: 20 amperes at 120/208 volt.
- 8-Wires (4 hots, 2 neutrals, 2 grounds).

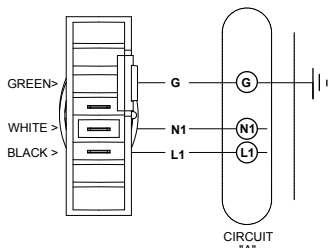
4/2/2 System Configuration (4 Hots, 2 Neutrals, 2 Grounds) 3+ 1 Wiring Configuration



Appropriate in areas where shared neutral conductors are utilized.

- Three circuits share #10 AWG neutral to manage harmonics for general purpose.
- One circuit on dedicated #10 AWG neutral for sensitive equipment.
- Isolated ground capability for sensitive equipment.
- Component Rating: 20 amperes at 120/208 volt.
- 8-Wires (4 hots, 2 neutrals, 2 grounds).

1/1/1 System Configuration (1 Hot, 1 Neutral, 1 Ground)



- One circuit capacity.
- Component Rating: 20 amperes at 120/208 volt.
- 3-Wires (1 hot, 1 neutral, 1 ground).

2.0 Extender Cables

Hubbell Connexion 2.0 extender cables have male (power "IN") / female (power "OUT") ends allowing them to be connected in the field as needed. Available in three different versions, 422, 332, and 111, in 5 ft. increments up to 30 ft.

422 Family	332 Family	111 Family	Length	Connectors
CEXT422MFL01	CEXT332MFL01	CEXT111MFL01	1 ft.	Male / Female
CEXT422MFL05	CEXT332MFL05	CEXT111MFL05	5 ft.	Male / Female
CEXT422MFL10	CEXT332MFL10	CEXT111MFL10	10 ft.	Male / Female
CEXT422MFL15	CEXT332MFL15	CEXT111MFL15	15 ft.	Male / Female
CEXT422MFL20	CEXT332MFL20	CEXT111MFL20	20 ft.	Male / Female
CEXT422MFL25	CEXT332MFL25	CEXT111MFL25	25 ft.	Male / Female
CEXT422MFL30	CEXT332MFL30	CEXT111MFL30	30 ft.	Male / Female
CEXT422FWL01	CEXT332FWL01	CEXT111FWL01	1 ft.	Female / Open
CEXT422FWL01XP*	CEXT332FWL01XP*	CEXT111FWL01XP*	1 ft.	Female / Open
CEXT422MWL01	CEXT332MWL01	CEXT111MWL01	1 ft.	Male / Open
CEXT422MWL01XP*	CEXT332MWL01XP*	CEXT111MWL01XP*	1 ft.	Male / Open
CEXT422MWL05	CEXT332MWL05	CEXT111MWL05	5 ft.	Male / Open
CEXT422MWL15	CEXT332MWL15	CEXT111MWL15	15 ft.	Male / Open



Note: *Standard lead length is 12 in. long. **XP** Suffix denotes 18 in. long leads for installations requiring extra-long wires.

Zone Boxes and Accessories

Zone distribution Boxes are the core of the Connexion 2.0 system. They serve as the main interface between the conventionally connected electrical system and the labor saving Connexion 2.0 system. With a large array of knock outs, they can accept most conduit sizes when run from the circuit breaker panel. They also accept labor saving Homerun cables as part of the Connexion 2.0 system. With depth of 3 inches, the zone boxes will fit in almost any raised flooring system. Custom configurations are also available. Contact Hubbell Wiring Systems for ordering information.



2.0 Zone Boxes

Zone Box Part Number	Wiring Configuration	Output Whips	Total Number of Circuits per Box	Circuits per Whip	Field Connection Type
ZB111C1W1POUT*	111	1	1	1	Wire nuts to open leads
ZB111C2W2P	111	2	2	1	Wire nuts to open leads
ZB111C4W4P	111	4	4	1	Wire nuts to open leads
ZB111C6W6P	111	6	6	1	Wire nuts to open leads
ZB111C8W8P	111	8	8	1	Wire nuts to open leads
ZB111C1W2TC	111	2	1	1	Single Screw down terminal block
ZB111C1W4TC	111	4	1	1	Single Screw down terminal block
ZB111C1W6TC	111	6	1	1	Single Screw down terminal block
ZB111C1W8TC	111	8	1	1	Single Screw down terminal block
ZB111C2W2TM	111	2	2	1	Multi Screw down terminal block
ZB111C4W4TM	111	4	4	1	Multi Screw down terminal block
ZB111C6W6TM	111	6	6	1	Multi Screw down terminal block
ZB111C8W8TM	111	8	8	1	Multi Screw down terminal block
ZB332C3W1POUT*	332	1	3	3	Wire nuts to open leads
ZB332C6W2P	332	2	6	3	Wire nuts to open leads
ZB332C12W4P	332	4	12	3	Wire nuts to open leads
ZB332C3W2TC	332	2	3	3	Single Screw down terminal block
ZB332C3W4TC	332	4	3	3	Single Screw down terminal block
ZB332C6W2TM	332	2	6	3	Multi Screw down terminal block
ZB332C12W4TM	332	4	12	3	Multi Screw down terminal block
ZB422S2C4W1POUT*	422, 2+2	1	4	4	Wire nuts to open leads
ZB422S2C8W2P	422, 2+2	2	8	4	Wire nuts to open leads
ZB422S2C16W4P	422, 2+2	4	16	4	Wire nuts to open leads
ZB422S2C4W2TC	422, 2+2	2	4	4	Single Screw down terminal block
ZB422S2C4W4TC	422, 2+2	4	4	4	Single Screw down terminal block
ZB422S2C8W2TM	422, 2+2	2	8	4	Multi Screw down terminal block
ZB422S2C16W4TM	422, 2+2	4	16	4	Multi Screw down terminal block
ZB422S3C4W1POUT*	422, 3+1	1	4	4	Wire nuts to open leads
ZB422S3C8W2P	422, 3+1	2	8	4	Wire nuts to open leads
ZB422S3C16W4P	422, 3+1	4	16	4	Wire nuts to open leads
ZB422S3C4W2TC	422, 3+1	2	4	4	Single Screw down terminal block
ZB422S3C4W4TC	422, 3+1	4	4	4	Single Screw down terminal block
ZB422S3C8W2TM	422, 3+1	2	4	4	Multi Screw down terminal block
ZB422S3C16W4TM	422, 3+1	8	16	4	Multi Screw down terminal block

Note: *OUT suffix denotes single whip output zone box, which will not be further expanded.

2.0 Furniture Feeds

Furniture feeds are junction boxes which come with a pre attached power "IN" connector allowing transition to building hard-wiring underneath the raised floor.

Zone Box Part Number	Wiring Configuration	Output Whips	Total Number of Circuits per Box	Circuits per Whip	Field Connection Type
ZB111C1W1PIN	111	1	1	1	Wire nuts to open leads
ZB332C3W1PIN	332	1	3	3	Wire nuts to open leads
ZB422S2C4W1PIN	422, 2+2	1	4	4	Wire nuts to open leads
ZB422S3C4W1PIN	422, 3+1	1	4	4	Wire nuts to open leads

2.0 Splitters

Distributes all cable conductors to up to three locations (one "IN", three "OUTS") to increase the amount of floor boxes fed from a single Zone Distribution Box output whip.

Catalog Number	Wires	Hot Circuits
SP31	3	1
SP83	8	3
SP84	8	4



2.0 Homerun Cables

The Homerun cable is a dedicated 9-conductor (#10 AWG, THHN / THWN) cable from the panel to the zone box and allows for savings by removing the need to lay conduit and pull wire.

Catalog Number	Length
ZBHR25	25 ft.
ZBHR50	50 ft.
ZBHR75	75 ft.
ZBHR100	100 ft.



Raised Access Floor Boxes

2-Gang Rectangular Cover Series

Rectangular Box - Contact Hubbell Wiring Systems for custom, pre-wired floor boxes

- 5 in. deep box allows for 2 in. conduits - ideal for furniture feed applications
- 2 ½ in. provides a solution for floors using short pedestals

Standard	Chicago	Knockouts Standard Style Only	Box Depth	Max Tile Thickness	Depth Behind Plate	Device Volume	Cover Series
AFB2G50	AFB2G50CHI	½ in. to 2 in.	5 in.	2 in.	2 ½ in.	60 cu. in.	2GAFB
AFB2G25	AFB2G25CHI	½ in. and ¾ in.	2 ½ in.	1 in.	2 ½ in.	30 cu. in.	2GAFB



AFB2G25



**AFB2G50 with
2GAFBVCVRBK**

Plates - for use in 2-Gang Floor Boxes

- UL 514A listed

Plate Style	(1) Decorator Opening	(1) Duplex Opening	(2) Extron® MAAP Openings	(2) Extron® Openings
Cat. No.	FBMPREC	FBMPDUP	FBMPMAAP	FBMPAAP



Plate Style	(2) 1 Unit Hubbell iStation Openings	(1) 1.5 Unit Hubbell iStation Opening	(1) Simplex Opening 1.40 in. Diameter	(1) Twist-Lock® Opening 1.60 in. Diameter
Cat. No.	FBMP2IM	FBMP15IM	FBMP139	FBMP156



Plate Style	1-Gang Blank	Cable Feed-Through with Bushing	(1) Opening for TracJack® or Series II®	(1) Opening with Hubbell ISF6 Frame for Keystone Jacks
Cat. No.	FBMPBNK	FBMPFT	FBMPTRAC	FBMP6KS



Rectangular Covers (for use with raised access tiles and wood floors)

- UL 514A listed
- Maximum static load of 800 lbs with 2x safety factor*
- Five architectural powder coat finishes



Die Cast Construction Powder Coated Finish	2-Gang Rectangular Cover		
	Surface Style	Surface Style with Insert	Furniture Feed Cover
Aluminum	2GAFBCVRALU	2GAFBCVRALUC	2GAFBFFCVRALU
Black	2GAFBCVRBK	2GAFBCVRBKC	2GAFBFFCVRBK
Brass	2GAFBCVRBRS	2GAFBCVRBRSC	2GAFBFFCVRBRS
Bronze	2GAFBCVRBRZ	2GAFBCVRBRZC	2GAFBFFCVRBRZ
Satin Nickel	2GAFBCVRNK	2GAFBCVRNKC	2GAFBFFCVRNK

Note: *Load applied through a 3 in. (76mm) mandrel in center of the cover.



Raised Access Floor Boxes

4-Gang Rectangular Cover Series

Rectangular Box - Contact Hubbell Wiring Systems for custom, pre-wired floor boxes

- 5 in. deep box allows for 2 in. conduits - ideal for furniture feed applications
- 2 ½ in. provides a solution for floors using short pedestals

Standard	Chicago	Knockouts Standard Style Only	Box Depth	Max Tile Thickness	Depth Behind Plate	Device Volume	Cover Series
AFB4G50	AFB4G50CHI	½ in. to 2 in.	5 in.	2 in.	2 ½ in.	57 ½ cu. in.	4GAFB
AFB4G25	AFB4G25CHI	½ in. and ¾ in.	2 ½ in.	1 in.	2 ½ in.	26 ½ cu. in.	4GAFB



AFB4G50

Plates - for use in 2, 4 and 6-Gang Floor Boxes

- UL 514A listed

Plate Style	(1) Decorator Opening	(1) Duplex Opening	(2) Extron® MAAP Openings	(2) Extron® Openings
Cat. No.	FBMPREC	FBMPDUP	FBMPMAAP	FBMPAAP



Plate Style	(2) 1 Unit Hubbell iStation Openings	(1) 1.5 Unit Hubbell iStation Opening	(1) Simplex Opening 1.40 in. Diameter	(1) Twist-Lock® Opening 1.60 in. Diameter
Cat. No.	FBMP2IM	FBMP15IM	FBMP139	FBMP156



Plate Style	1-Gang Blank	Cable Feed-Through with Bushing	(1) Opening for TracJack® or Series II®	(1) Opening with Hubbell ISF6 Frame for Keystone Jacks
Cat. No.	FBMPBNK	FBMPFT	FBMPTRAC	FBMP6KS



**AFB4G25 with
4GAFBCVRBK**

Rectangular Covers (for use with raised access tiles and wood floors)

- UL 514A listed
- Maximum static load of 800 lbs with 2x safety factor*
- Five architectural powder coat finishes



Die Cast Construction Powder Coated Finish	4-Gang Rectangular Cover	
	Surface Style	Surface Style with Insert
Aluminum	4GAFBCVRALU	4GAFBCVRALUC
Black	4GAFBCVRBK	4GAFBCVRBKUC
Brass	4GAFBCVRBRS	4GAFBCVRBRSC
Bronze	4GAFBCVRBRZ	4GAFBCVRBRZC
Satin Nickel	4GAFBCVRNK	4GAFBCVRNKUC

Note: *Load applied through a 3 in. (76mm) mandrel in center of the cover.

Raised Access Floor Boxes 4-Gang Round Cover Series

RAFB4 Series - Contact Hubbell Wiring Systems for custom, pre-wired floor boxes

Includes:

- Base box shipped with temporary install cover

Catalog Number	Cover Series	Depth	Tile Thickness	Depth Behind Plate	Knockouts	Diameter
RAFB4BASE	CFBS1R8	6 ¼ in.	¾ in. - 2 in.	2 ¾ in.	¾ in. - 2 in.	8 in.



RAFB4BASE

RAFB4 Series – Round Floor Box with Cover

Includes:

- **RAFB4BASE** and 8 in. cover

Cover Finish	Catalog Number
Brushed Aluminum	RAFB4ALU
Black Powder Coated	RAFB4BLK
Brass Plated	RAFB4BRS
Bronze Plated	RAFB4BRZ
Satin Nickel Plated	RAFB4NKL



RAFB4BRS



RAFB4NKL
with Devices



Round Covers

Round covers are suitable for use with all floor types

Plate Style	Brushed Aluminum	Black Powder Coated	Brass Plated	Bronze Plated	Satin Nickel Plated
Catalog Number	CFBS1R8CVRALU	CFBS1R8CVRBLK	CFBS1R8CVRBRS	CFBS1R8CVRBRZ	CFBS1R8CVRNKL

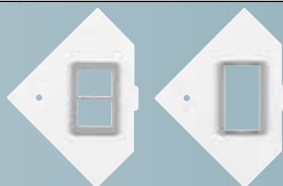
RAFB4 Series – Plates

- All **RAFB4SP** series plates are powder coated white

Plate Style	(1) Decorator	(1) Duplex	Blank	(1) Simplex Opening 1.40 in. Diameter	(1) Twist-Lock® Opening 1.60 in. Diameter
Catalog Number	RAFB4SPDECO	RAFB4SPDUPLEX	RAFB4SPBLANK	RAFB4SPTL14	RAFB4SPTL16



Plate Style	(1) Hubbell iStation Opening for 3 Units	Opening to Accept Bezels for Ortronics TracJack®	(3) Extron® MAAP Modules	(2) Extron® AAP Modules
Catalog Number	RAFB4SP3UIS	RAFB4SPORT	RAFB4SP3MAAP	RAFB4SP2AAP



Extron® is a registered trademark of Extron Electronics.
Crestron® is a registered trademark of Crestron Electronics, Inc.
FSR® is a registered trademark of FSR Inc.
TracJack®, Series II® and Ortronics® are registered trademarks of Ortronics/Legrand.

Raised Access Floor Boxes

10-Gang Series

AFB10G Series - Contact Hubbell Wiring Systems for custom, pre-wired floor boxes

- Designed for wood and tile applications
- 5 ½ in. deep box allows for 2 in. conduits - ideal for furniture feed applications

Catalog Number	Box Type	Knockouts	Box Depth	Max Tile Thickness	Depth Behind Plate	Device Volume	Cover Series
AFB10G55	Standard	½ in. to 2 in.	5 ½ in.	2 in.	2 ½ in.	57 ½ cu. in.	10GAFB
AFB10G55CHI	Chicago	None					



AFB10G55



AFB10G55
with Devices

Rectangular Covers (for use with raised access tiles and wood floors)

- Die cast construction available in five architectural finishes
- UL 514A listed
- Maximum static load of 1500 lbs with 2x safety factor*

Finish	Surface Style Cover	Surface Style Cover with Insert
Aluminum Powder Coated	10GAFBCVRALU	10GAFBCVRALUC
Black Powder Coated	10GAFBCVRBK	10GAFBCVRBKC
Brass Powder Coated	10GAFBCVRBRS	10GAFBCVRBRSC
Bronze Powder Coated	10GAFBCVRBRZ	10GAFBCVRBRZC
Satin Nickel Powder Coated	10GAFBCVRNK	10GAFBCVRNKC

Note: *Load applied through a 3 in. (76mm) mandrel in center of the cover.



RAFB10 Series – Plates

Plate Style	(1) Decorator Opening	(1) Duplex Opening	Blank	Decorator Opening Plate Including Hubbell ISF6GY	(2) Openings to Accommodate (6) Ortronics TracJack®
Cat. No.	FB10MPREC	FB10MPDUP	FB10MPBNK	FB10MPKEY	FB10MPTRAC



Plate Style	(2) Decorator Openings	(4) Extron® MAAP Modules	(4) Extron® AAP Modules	For (6) 1 Unit Hubbell iStation Modules	Replacement Spacer Around Wire-Way
Cat. No.	FB10MP2A	FB10MPMAAP	FB10MPAAP	FB10MP2B	FB10MPX



Plate Style	(1) Twist-Lock® Opening 1.60 in. Dia. (Uses 2 Gangs)	(1) Simplex Opening 1.40 in. Dia. (Uses 2 Gangs)	(2) Twist-Lock® Opening 1.60 in. Dia. (Uses 3 Gangs)	(2) Simplex Opening 1.40 in. Dia. (Uses 3 Gangs)
Cat. No.	FB10TLA	FB10TLX	FB10TLB	FB10TLY



Plate Style	(3) Twist-Lock® Opening 1.60 in. Dia. (Uses 5 Gangs)	(3) Simplex Opening 1.40 in. Dia. (Uses 5 Gangs)	(2) 2-Gang. Meets NEMA Spacing. Ideal for Crestron® DM -TX Product and Power	(4) Single Service Openings Utilizing NEMA Wallplate (Uses 5 Gangs)
Cat. No.	FB10TLC	FB10TLZ	CFB10NEMA	FB10MPNEMA4G



Extron® is a registered trademark of Extron Electronics.
 Crestron® is a registered trademark of Crestron Electronics, Inc.
 FSR® is a registered trademark of FSR Inc.
 TracJack®, Series II® and Ortronics® are registered trademarks of Ortronics/LeGrand.

Additional Hubbell Products Compatible with Raised Access Floor Boxes

Receptacles, GFCIs and USB Devices

Hubbell offers a variety of tamper-resistant receptacles that comply with NEC requirements that all 15A and 20A 125V receptacles shall be "tamper-resistant" in child care facilities and residencies.



Style Line® Decorator Commercial Spec. Grade Receptacles

Description	Color	15A 120 V AC	20A 125V AC
Smooth nylon face, Style Line® decorator duplex, back and side wired	Almond	DR15AL	DR20AL
	Black	DR15BLK	DR20BLK
	Brown	DR15	DR20
	Gray	DR15GRY	DR20GRY
	Ivory	DR15I	DR20I
	Light Almond	DR15LA	DR20LA
	Red	DR15R	DR20R
	White	DR15WHI	DR20WHI
Tamper-Resistant, Style Line® decorator duplex, smooth nylon face, back and side wired	Almond	DR15ALTR	DR20ALTR
	Black	DR15BLKTR	DR20BLKTR
	Brown	DR15TR	DR20TR
	Gray	DR15GRYTR	DR20GRYTR
	Ivory	DR15ITR	DR20ITR
	Light Almond	DR15LATR	DR20LATR
White	DR15WHITR	DR20WHITR	



AUTOGUARD® Self Test GFCI Receptacles Tamper-Resistant and Weather Resistant

Description	Color	15A 120 V AC	20A 125V AC
Flush, nylon face, back and side wired, multiple drive screws, auto-grounding clip	Black	GFTWRST15BK	GFTR20BK
	Brown	GFTWRST15	GFTR20
	Gray	GFTWRST15GY	GFTR20GY
	Ivory	GFTWRST15I	GFTR20I
	Light Almond	GFTWRST15LA	GFTR20LA
	Red	GFTWRST15R	GFTR20R
	White	GFTWRST15W	GFTR20W

USB Charging Receptacles, Tamper-Resistant

Description	Color	15A 120 V AC	20A 125V AC
Two USB ports 3.8 Amp, 5V DC, Type A, class 2.0 Style Line® decorator duplex	Black	USB15X2BK	USB20X2BK
	Brown	USB15X2	USB20X2
	Gray	USB15X2GY	USB20X2GY
	Ivory	USB15X2I	USB20X2I
	Light Almond	USB15X2LA	USB20X2LA
	Red	USB15X2R	USB20X2R
	White	USB15X2W	USB20X2W

AV Connections

Hubbell iSTATION products provide a consistent and practical solution for delivering all types of connections where you need them - in the wall, floor or table. Hubbell iSTATION's modular design allows users to custom configure plate solutions to their requirements.



Modules

Description	Catalog Number
RCA Component, Video, Solder, 1 Unit	IMCRS1xx
RCA Component, Video, Gold, Pass-Through, F/F Coupler, 1 Unit	IMCRF1
HDMI Feed-Through Coupler	HDMIC14
Keystone HDMI Feed-Through	SFHC14xx

xx = Color: **AL** (Almond), **BK** (Black), **EI** (Ivory), **GY** (Gray), **OW** (Office White) and **W** (White).



Unloaded Modules

Description	Catalog Number
Keystone; 1-Port; 1 Unit	IM1K1xx
Keystone; 2-Port; 1 Unit	IM2K1xx
SC Angled; 1-Duplex; 1.5 Unit	IM1SCA15xx
SC Angled; 2-Duplex; 2 Unit	IM2SCA2xx

Blank 15-Pin/9-Pin HDMI

Description	Catalog Number
HD15/9-Pin or HDMI; 1 Unit	IMBDS1xx
with 3.5mm Stereo Jack; 1.5 Unit	IMBDSA15xx
with 3.5mm SJ+AV Conn; 2 Unit	IMB153X2xx

Data and Audio/Video Connectivity

Hubbell's category rated modular jacks provide leading edge performance and innovative designs to support today's Ethernet protocols, IP devices and high bandwidth audio video applications. These connectors install with a snap and provide quick, easy "screw-on" termination.



Data Jacks

Description	Category 6A	Category 6	Category 5e
1 per Bag/Cartron of 25	HJ6Axx	HXJ6xx	HXJ5Exx
25 per Bag/Cartron of 1	HJ6Axx25	HXJ6xx25	HXJ5Exx25

xx = Color: **AL** (Almond), **B** (Blue), **BK** (Black), **EI** (Electric Ivory), **GL** (Gold), **GY** (Gray), **GN** (Green), **LA** (Light Almond), **OW** (Office White), **OR** (Orange), **P** (Purple), **R** (Red), **TI** (Telco Ivory), **W** (White) and **Y** (Yellow).



F-Type Connectors

F-Type Coupler	F-Type Coupler Bulkhead F/F Gold	F-Type to RCA Bulkhead F/F Gold	F-Type Recessed
SFFxxX	SFFGxx	SFRFGxx	SFGRFxx

xx = Color: **AL** (Almond), **BK** (Black), **GY** (Gray), **EI** (Ivory) **LA** (Light Almond), **OW** (Office White) and **W** (White). **SFRFG** Series not available in Almond or Light Almond. **SFGRF** Series not available in Light Almond.

HUBBELL CONNEXION 2.0

Visit the Hubbell website for a complete line of receptacles, data and AV devices.



Hubbell Installation Efficiency Product Solutions



Pre-Fab Solutions

Pre-fab solutions can reduce project costs by as much as 30% while simultaneously reducing on-site waste. The Rough-in Ready Pre-Fab solution offered by Hubbell provides a variety of options from innovative bracket to cable-ready assemblies.



SNAPConnect® Modular Devices

Hubbell's SNAPConnect® modular devices save time and money, through innovative designs as well as through the delivery of a safe, reliable and durable connection. SNAPConnect® reduces labor costs during the initial installation and also provides future labor savings if device replacement or upgrade is ever required.

Available Literature

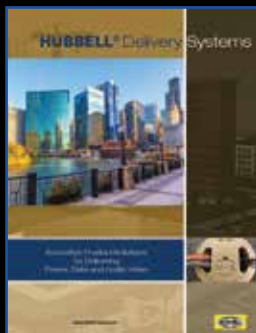
Hubbell offers an extensive literature library for product support. Downloadable PDFs are available online.



Hubbell SystemOne
Recessed 4, 6 and 8 Inch
Fire-Rated Poke-Throughs



Hubbell SystemOne
Recessed Floor Boxes



Hubbell Delivery Systems
Product Guide

HUBBELL®
Wiring Systems

www.hubbell-wiring.com
www.hubbell-premise.com

